



Friday 1st May 2020

Dear Parents and Carers,

We hope this newsletter finds you all well. I know that staff have been speaking to many families this week and it has been so positive to hear how you all are adapting to these challenging times - working from home, caring for family members, completing school activities amongst a whole host of other things - it really is a tall order! The phone calls are to support: to be a familiar voice, help children feel reassured and feel part of a strong school community. They are not to 'check-up' on how much work is being done, although some children may want to discuss their activities.

There are some days when I feel my family and I have everything in hand and then the next day things really don't go to plan – the reassuring thing is that from speaking to many of you it seems this is fairly common. Please do reach out to us as our teachers are working hard to keep all children engaged and can help to provide support in a variety of ways.

Our West Jesmond Rainbow

When children return to school, in whatever form this takes, we want to make this a special time filled with joy and excitement. We plan to welcome returning children with a huge rainbow display. We would like all of our West Jesmond family to contribute to our rainbow – children, parents, staff, governors and also children who are due to join us in September. This will be a powerful way of showing how we remained united with each other through this challenging time.

We are inviting everyone to draw around their hands, cut them out and then decorate them in their year group assigned colour. You could use paint, coloured pencils, collage, photos, anything that takes your fancy. Miss Glen is then going to collate them and begin the construction of our rainbow.

Reception- Red	Year 1- Orange	Year 2 - Yellow
Year 3 – Green	Year 4 – Blue	Year 5 – Indigo (light purple)
Year 6 – Violet (darker purple)	Staff, parents and governors – please choose a colour	

To send us your rainbow hands we have set up a **post box attached to the railings near the After School Club entrance**. If you live near school, then as part of your daily exercise, you may wish to post your hands in the box to us. Alternatively, you can post them to the School Office.

Executive Head Teacher: Gary Wallis-Clarke MA in Education BA (Hons) NPQH
 Deputy Head Teacher: Rebecca McVittie MSc, BSc (Hons) PGCE
 West Jesmond Primary School, Tankerville Terrace,
 Newcastle upon Tyne NE2 3AJ
 T: (0191)2810000 E: office@westjesmond.newcastle.sch.uk
 W: www.westjesmondprimary.org.uk



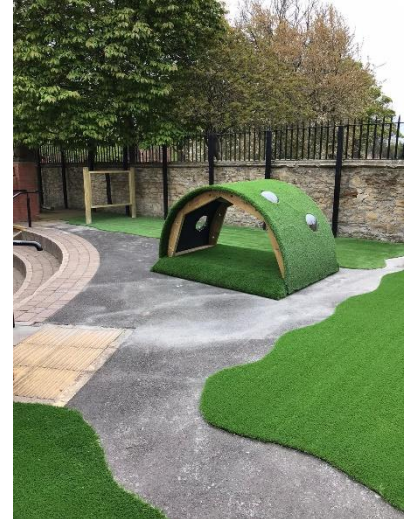
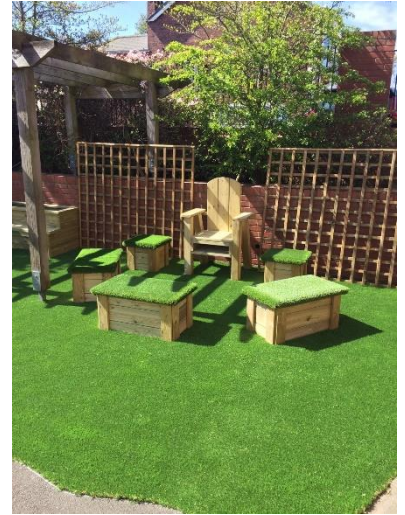
National Teaching School
 designated by

 National College for
 Teaching & Leadership



Secret Garden

This week the first phase of our Secret Garden renovations were completed. The garden is in memory of our dear friend and colleague Deborah Hainsworth who contributed so much to our school and community. We are thrilled with our new green and quiet space. Miss Jordan and Mr Jones already have lots of plans to personalise the area even more using suggestions collected from our children, families and staff. Our aim is for the children to create these when school reopens. We will then have an official opening in celebration of Deb's memory and our school community coming back together. Last Friday would have been the Friends of West Jesmond Spring Ball to raise funds for the project. This has been postponed until Friday 13th November and we hope to see as many of you there as possible, to support this important project.



Baby joy

Over the last few weeks we have received lovely news that Miss Tomlin and her partner Paul have given birth to their son, Luca. In addition, Mr McGrath and his wife Claire have welcomed into the world their son, Wilf. Both families are doing well and we are sending them our very best. We look forward to meeting the new arrivals soon.

Take care in the week ahead, sending my very best wishes.

A handwritten signature in black ink, which appears to read 'Rebecca McVittie'.

Rebecca McVittie

Deputy Headteacher