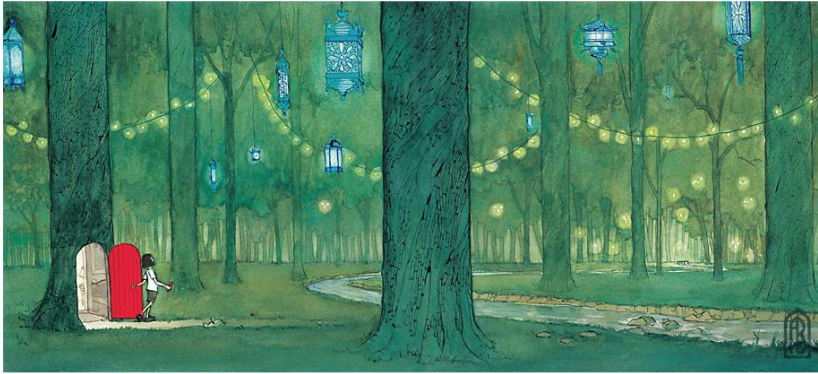


FOREST



Credit: Aaron Becker

- What's on the other side of the door?
- What is the girl holding in her hand? Why?
- How did she get to the forest?
- Where is this?
- Who hung the lanterns in the trees?
- Where does the stream lead?
- Will the girl go back through the door or stay in the forest? Predict what will happen next.
-

KITE-EATING TREE



Credit: Tyler Carter

- What has happened here?
- Why is the boy hanging from the tree?
- Why is she wearing ice skates but he isn't?
- What might she be saying to him?
- How is he going to get down?
- What happened 5 minutes before this scene? What will happen 5 minutes after?